

Chile's coal phase-out update and next steps

Carolina Gómez

Environment and Climate Change
Division
Ministry of Energy
June, 2020

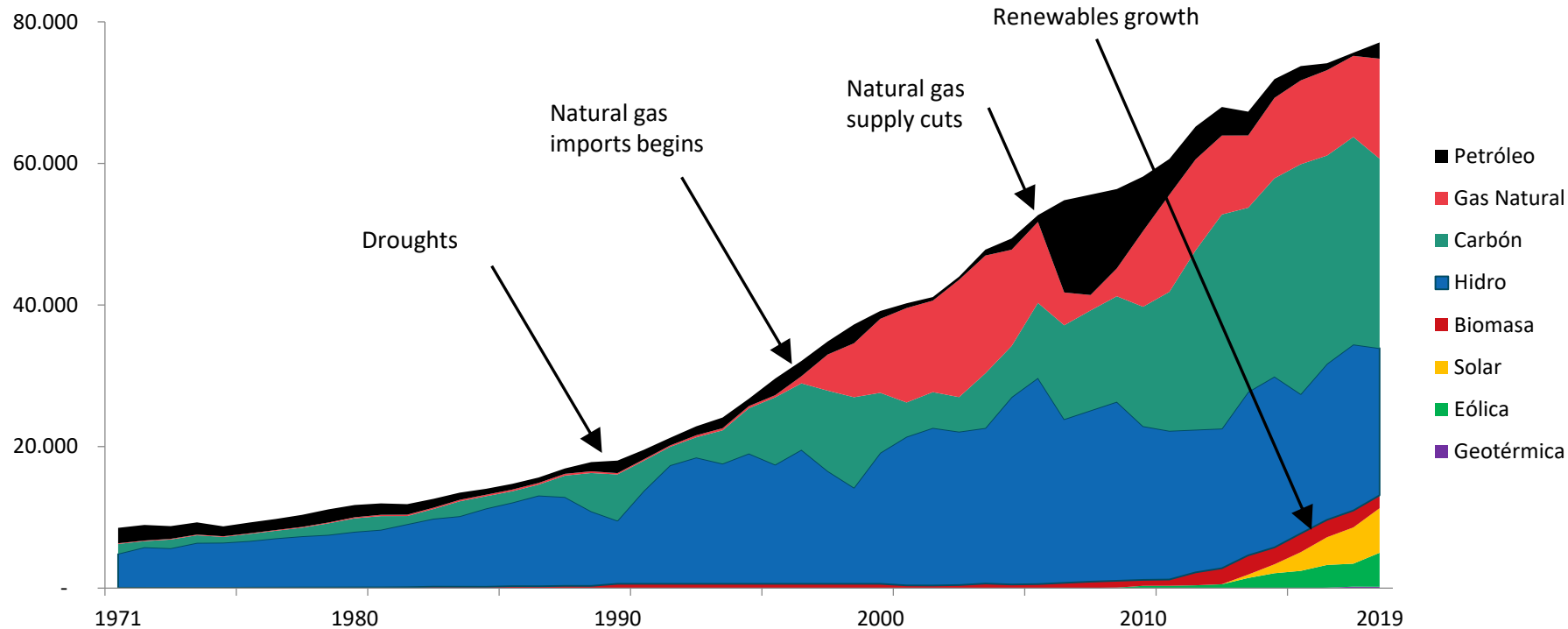


Ministerio de
Energía

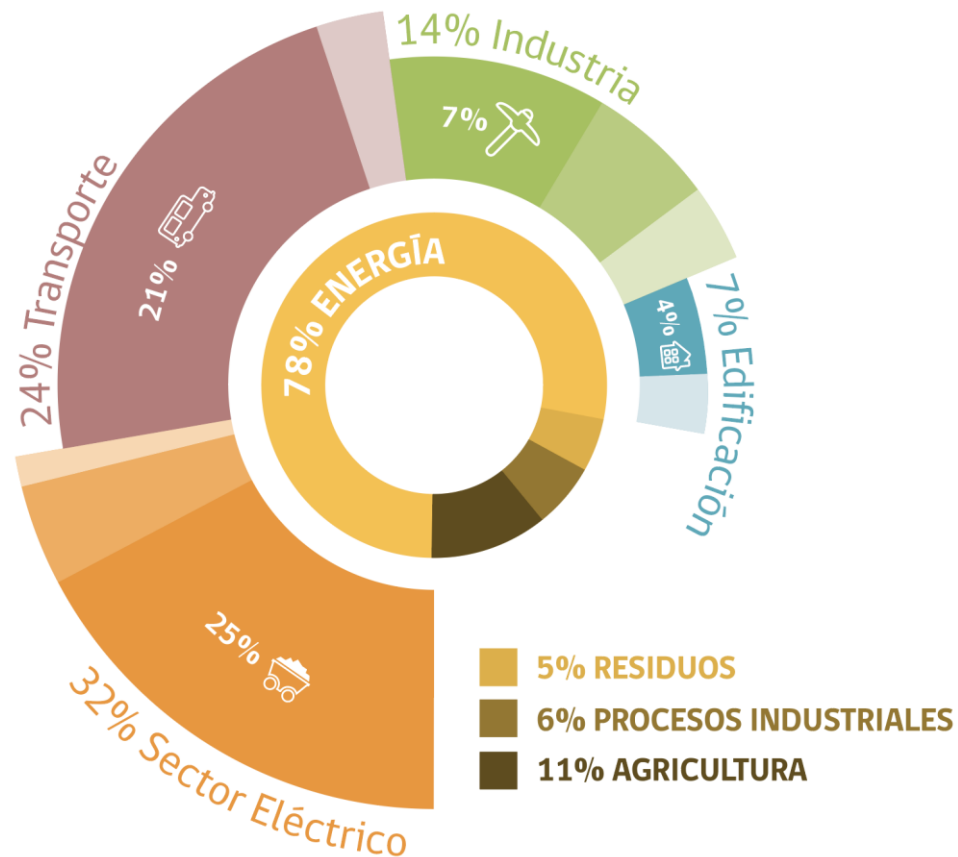
Gobierno de Chile

40% of electricity generation is coal-based

GWh



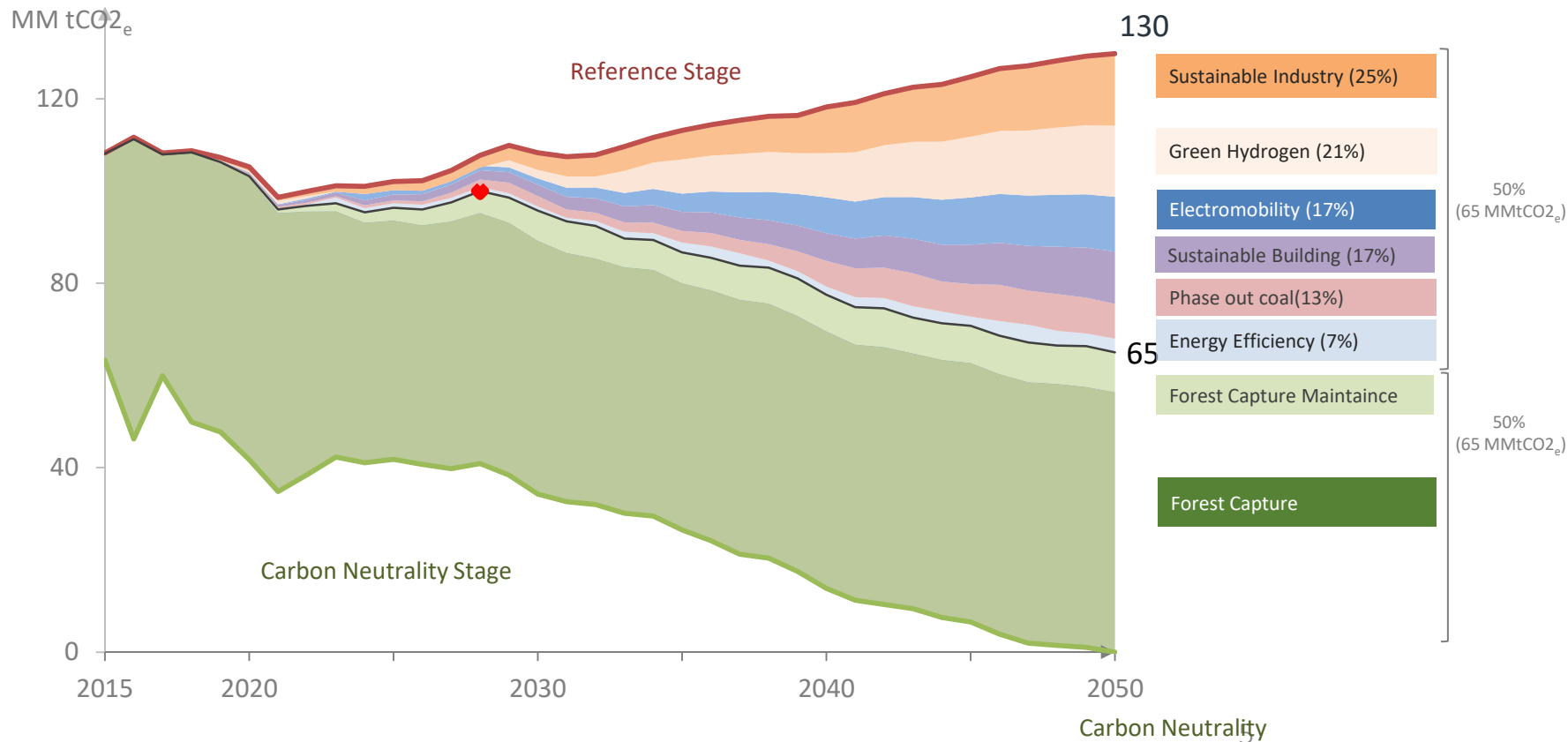
Today the energy sector is the largest CO₂ emitter





Carbon neutrality 2050

Phase- out coal is one of the principal measures to reach Carbon Neutrality



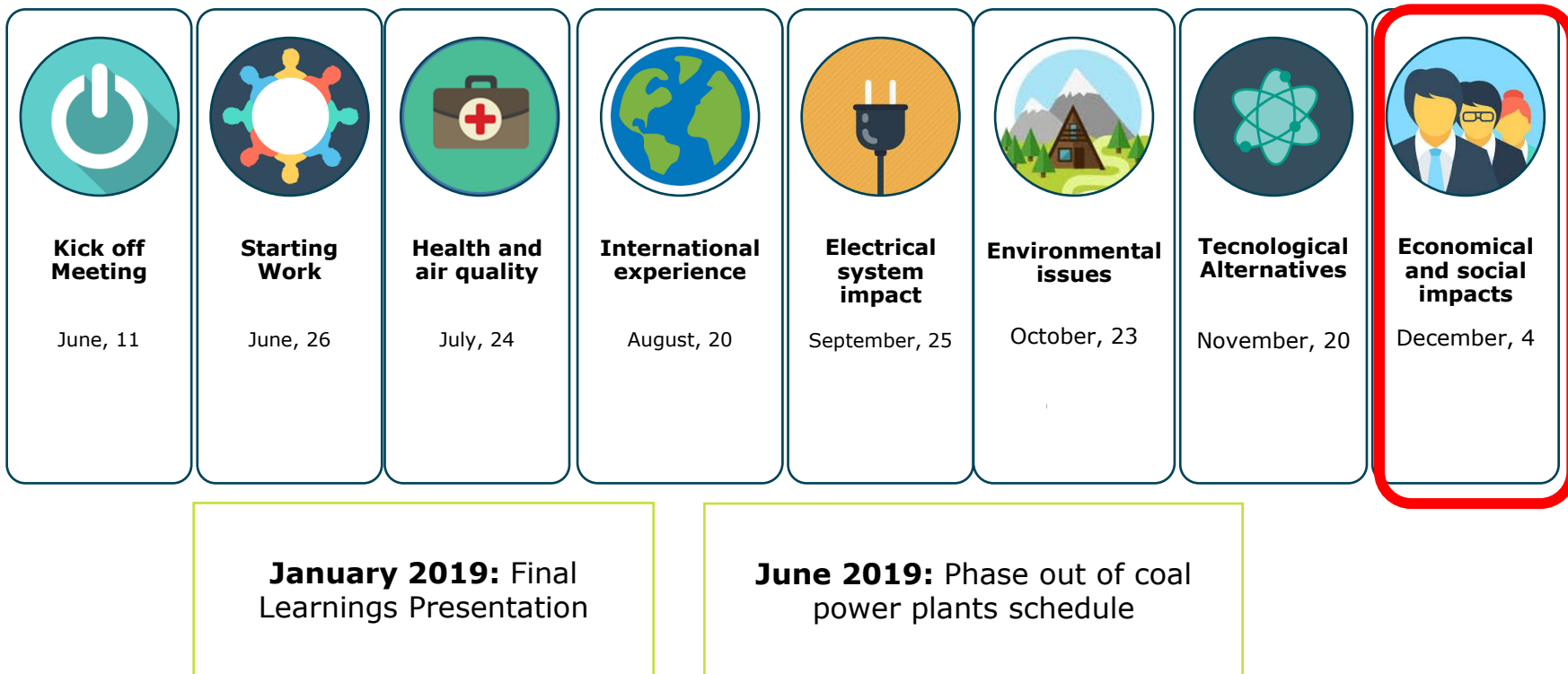
Voluntary Agreement for coal power plants withdrawal

Voluntary Agreement was signed in January 2018
and ratified in May 2018, in the Energy Road Map 2018-2022



1. **Not to build new coal power plants** unless they have CCS or similar technology
2. The Ministry of Energy will lead a **working group** with main stakeholders to establish criteria to provide a smooth transition to a low carbon economy in social, economic, environmental, health, employment and technical terms
3. To define a **schedule to phase out** or reconvert existing coal power plants

Coal phase out Roundtable 2018-2019



Coal phase out Roundtable Stakeholders

	Institutions
Public	Ministry of Energy
Public	National Energy Commission
Public	Ministry of Environment
Public	Municipality of Tocopilla

	Institutions
NGO	WWF Chile
NGO	Casa de la Paz
NGO	Chile Sustentable
Civil Society	Civil Society Council of Min. of Energy

	Institutions
Private	Engie
Private	ENEL
Private	AES Gener
Private	Colbún

	Institutions
University	Pontificia Universidad Católica
University	Universidad Adolfo Ibáñez
International Inst.	GIZ – German Cooperation
Independent Inst.	National Electrical Coordinator

	Institutions
Union	Association of Electricity Generators
Union	Coal Power Plants Syndicate
Clients	Mining Council
Clients	Unregulated Energy Consumers Association
Clients	Consumers and users organization (ODECU)

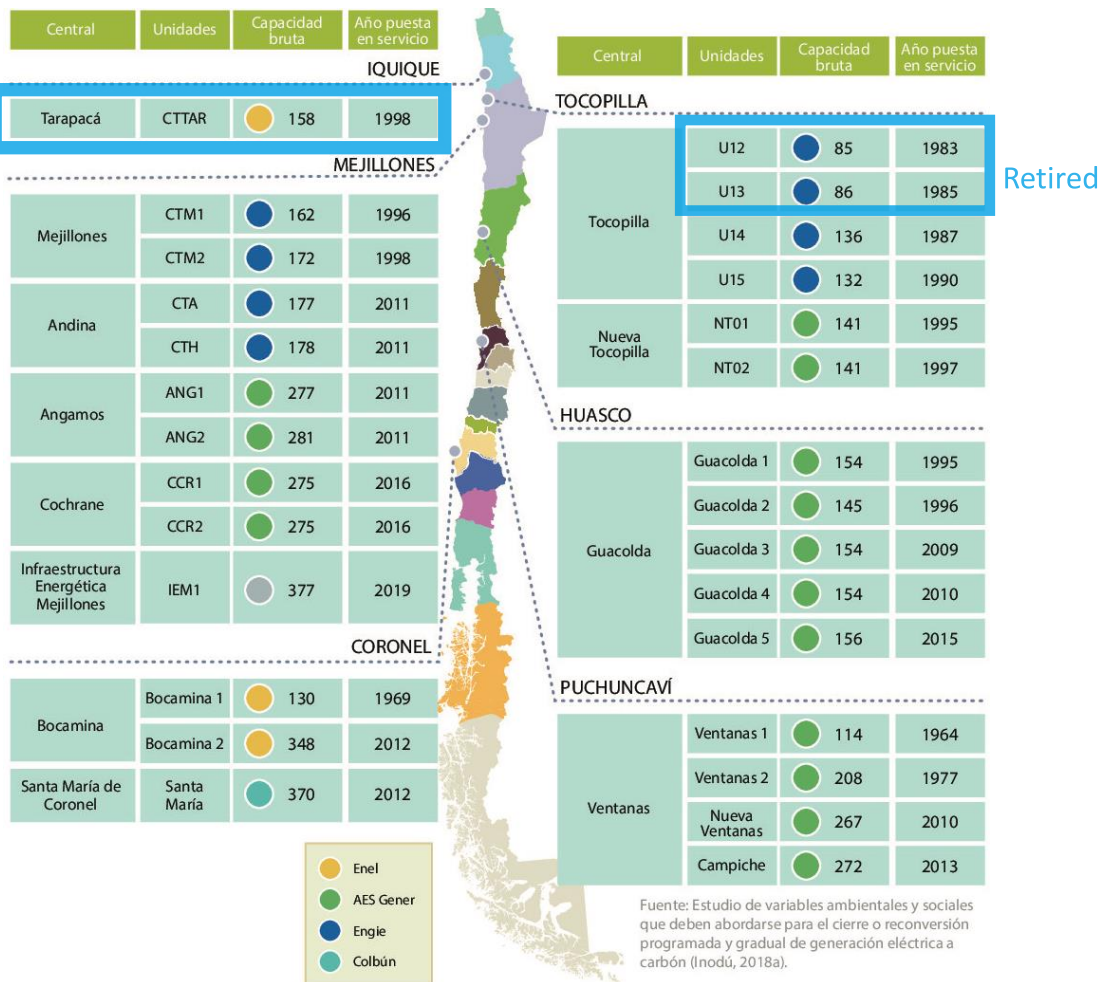
28 Coal Units, 5 GW of installed capacity

Retired

3 plants have been retired since June 2019, having today 25 plants with 5197 MW.

At the end of this year, the central Ventanas 1 (Puchuncaví) and Bocamina 1 (Coronel) will be retired.

By 2024, 11 plants will be closed, which represent 31% of the coal capacity (1,731 MW)





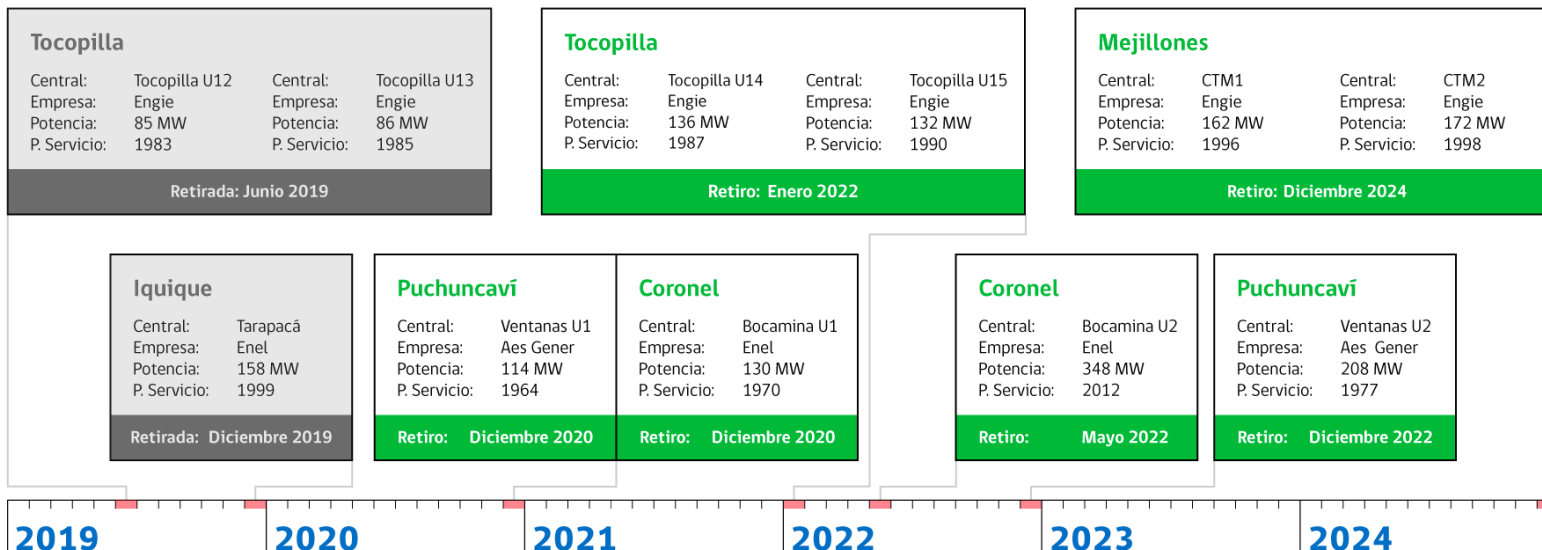
Schedule of the first stage of coal-phase out

Working groups every five years for schedule review

2019-2024



Primera fase: 1.731 MW



People-centered energy transition



Employment Associated with Coal Power Plants

- Direct employment: **4.391** people (contracts or subcontracts)
- Indirect employment: **9.505** people (value chain and its productive linkages)
- **0.17%** of total employment in Chile (direct and indirect)

	Iquique	Mejillones	Tocopilla	Huasco	Puchuncaví	Coronel
Direct Employment	150	1,533	589	533	808	777
% of total in commune	0.14%	3.8%	4.4%	6.8%	1.6%	0.3%

An aerial photograph of a coastal industrial facility, likely a port or refinery, situated at the base of a large, rugged mountain range. The facility includes several large storage tanks, industrial buildings, and a pier extending into the sea. Several ships are docked at the pier, and others are visible in the water. The mountains in the background are steep and rocky, with some vegetation. The sky is clear and blue.

June 23, 2020

LAUNCH OF THE ELABORATION PROCESS OF JUST TRANSITION STRATEGY IN ENERGY



Just Transition Motivation

To reach an energy transition with
OPPORTUNITIES to the community.

to work in a COLLABORATIVE way with
all public institutions involved

To create effective participation with
community and organizations.

GOVERNANCE

Management
Level



INTER-MINISTERIAL COMMITTEE

Ministry of Labour

Ministry of Energy

Ministry of the Environment

Other related Ministries



Central
Strategic
Level



EXECUTIVE COMMITTEE

Executive Secretary
(Ministry of Energy)

Public services, companies, communities, unions, international agencies (GIZ, CEPAL, IDB).



Local
Operational
Level

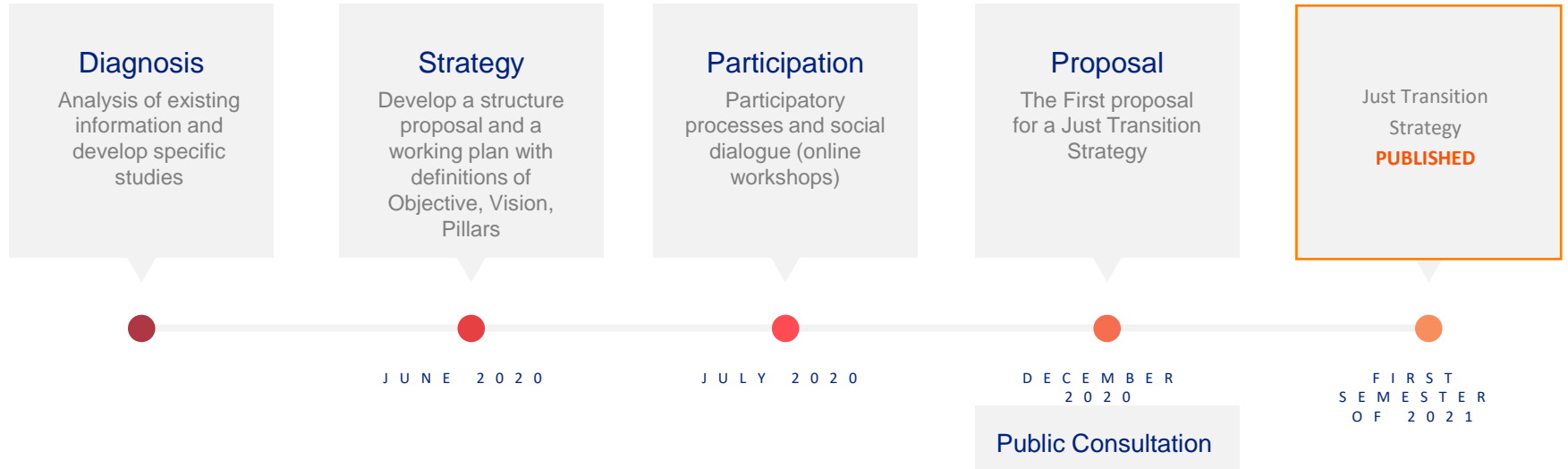


LOCAL COMMITTEE

Local representatives, public services and companies at the community level.

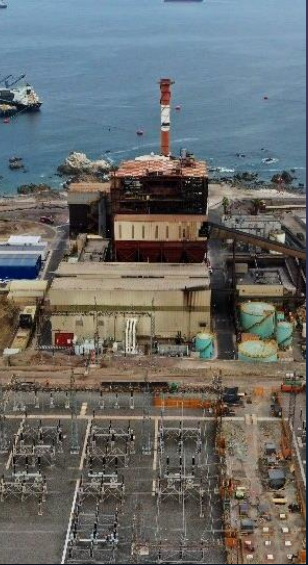
The Working Plan

J U S T T R A N S I T I O N S T R A T E G Y I N E N E R G Y

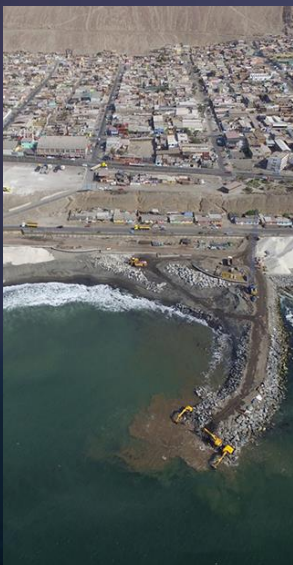


PHASE OUT COAL PLAN

TARAPACÁ



TOCOPILLA



MEJILLONES



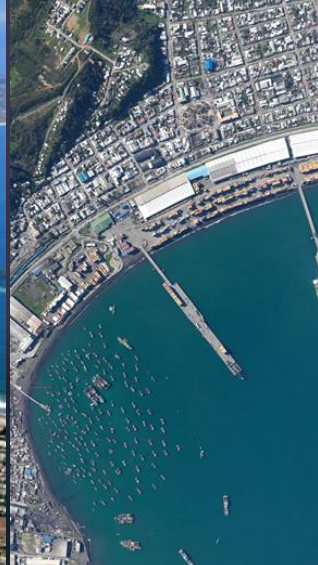
HUASCO



PUCHUNCAVÍ



CORONEL



Chile's coal phase-out update and next steps

Carolina Gómez

Environment and Climate Change
Division
Ministry of Energy
June, 2020



Ministerio de
Energía

Gobierno de Chile