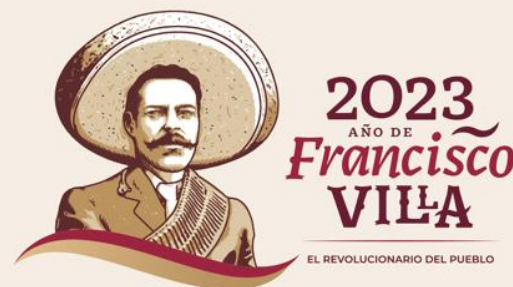


Activities of the CITES Scientific Authority to promote traceability and identification of Sharks

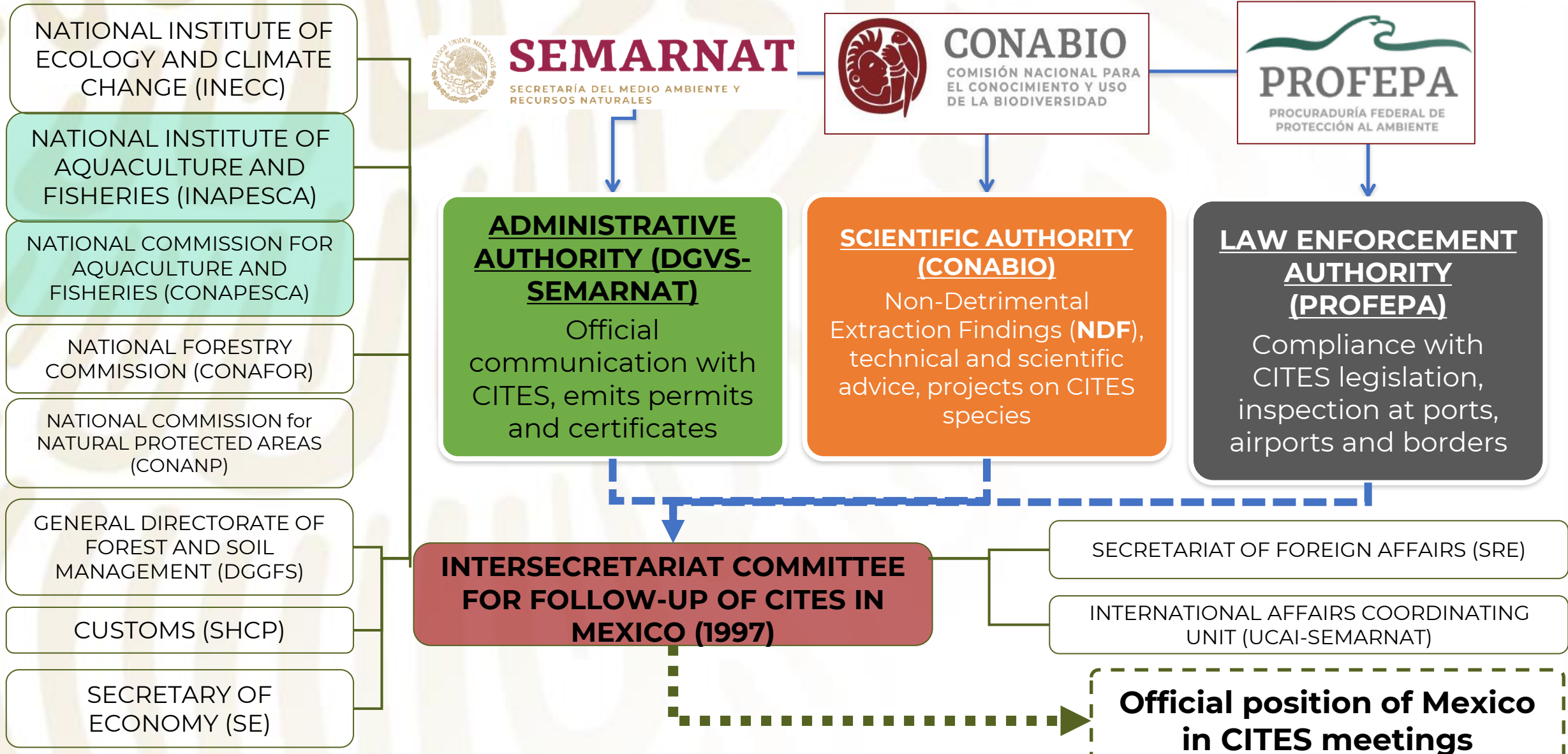
CPTPP Workshop on Combating Illegal Trade of Wildlife Species: Sharks and
Stingrays, May 2023



M. In C. **Emmanuel Rivera Téllez**
CITES Wildlife Specialist
Coordination of the CITES Scientific Authority







CoP12, Chile, 2002

Critical path of **collaboration and coordination** between CITES Authorities (DGVS – CONABIO – PROFEPA) and other Authorities of the Intersectoral Committee (2014 & **2019**):

Subject	General activities	Responsible
1. Scientific information	Publication on Mexican sharks in CITES	CONABIO
	Special publication on shark fishing species in Mexico	INAPESCA
	Population monitoring and estimation of extraction rates	CONAPESCA, INAPESCA, CONANP
	<u>NDF formulation</u>	<u>CONABIO, INAPESCA</u>
	<u>ID material</u>	CONABIO, CONAPESCA, INAPESCA, PROFEPA
2. Management	Productive Chains	CONAPESCA, INAPESCA, DGVS, PROFEPA, SE, CUSTOMS
	Normativity and procedures	
	Customs codes	
3. Capacity Building	Use of identification materials	CONAPESCA, INAPESCA, DGVS, CONABIO, PROFEPA
	CITES Courses	
4. Inter-institutional coordination	Financing, Contact with other Parties	FISHERIES SECTOR AND ENVIRONMENTAL



National & international reports



Conservation, use and sustainable harvest of Mexican sharks listed in CITES



Vulnerability Analysis (PSA): Productivity and Susceptibility Management Risk (MRISK)



Conversion factors between shark products



CEC - Action Plans for Legal, Sustainable and Traceable Trade in Sharks



Intersectoral teams for the reconstruction of catches and analysis of MSY



Sustainable export volumes (MSY Martell-froese, 2013)



Video clip to improve the filling of arrival notices



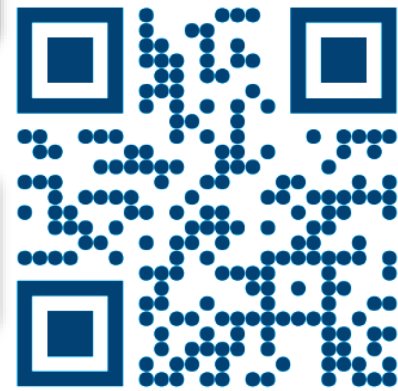
Strengthening the implementation of Appendix II

COLOR CODE

SUSTAINABLE

LEGAL

TRACEABLE



[Bit.ly/mitiburon](https://bit.ly/mitiburon)

- I. Compilation of papers, reports and theses on conversion factors between dry and fresh fins and shark body weight.
- II. Classification of the information resulting from the combination of three successive categories:

Taxonomic accuracy

- A. Species specific information
- B. Information at gender level
- C. Information at the level of common name "shark"

Regional precision

1. Study in Mexico
2. Study in America
3. Study in another part of the world

Sample size

- i. n greater than 30 samples
- ii. less than 30 samples

Sphyma lewini

PRELIMINARY REASSESSMENT OF THE VALIDITY OF THE 5% FIN TO CARCASS WEIGHT RATIO FOR SHARKS

Enric Cortés¹ and Julie A. Neer¹

SUMMARY

*We assessed the validity of the continued use of the 5% fin weight to carcass weight ratio using available data from various fishery-independent and fishery-dependent sources. The fin to carcass ratio is highly variable, depending on species, fin set, and finning procedure. Ratios (fin weight [FW] to dressed carcass weight [DW]) range from 2.5% for the silky shark, *Carcharhinus falciformis* (n = 19) to 5.3% for the sandbar shark, *C. plumbeus* (n = 39) for the*

Precision	% FFN: Whole Shark	No.	Place	Reference
A2i ✓	1.66	43	USA	Cortés and Neer (2006)
A3ii ✗	4.49	14	Southwest en Indian Ocean	Arizet al (2008)

All factors were validated by the fisheries authorities in Mexico (INAPESCA and CONAPESCA).



Conversion factors between shark products

OBJECTIVES

- Create capacities in fishermen's for the correct filling of arrival notices.
- Expedite the emission of CITES permits
- Highlight the essential role that fishermen play in helping to assess the state of the resource they harvest

WORKFLOW

1. WWF + CONABIO Design of the script
2. WWF hired Perro-Rojo (filmmaker)
3. Preview of videoclip reviewed by SOMEPEC & fishermen
4. Final video launched in 2022



Video clip to improve the filling of arrival notices

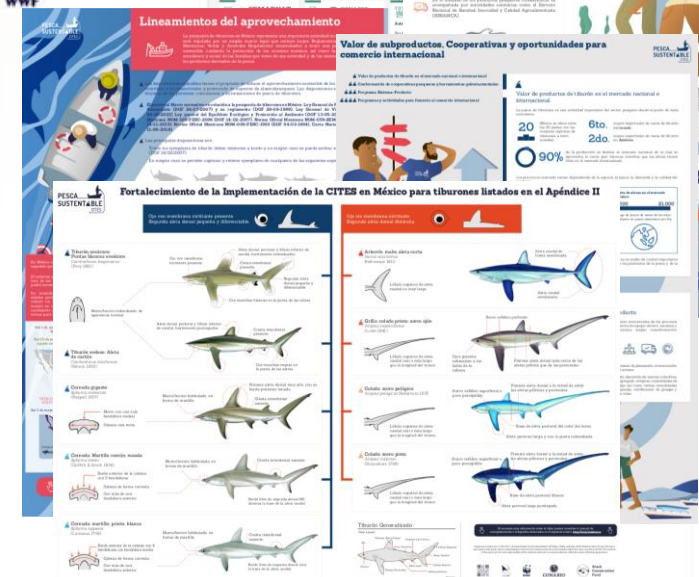
[Bit.ly/mitiburon](https://bit.ly/mitiburon)

OBJECTIVES

- Strengthen sustainability in the harvest of sharks listed in CITES (filling out arrival notices, current regulations and applicable sanctions, use of identification tools, promotion of fishing cooperatives and marketing).

WORKFLOW

- SOMEPEC + CONABIO & WWF (with funds of SharkConsFund implemented the project in 2022
- Integrate a team of 10 local champions or “fisheries sustainability ambassadors - FSA” (local instructors from the five main shark fishing camps in Mexico),
- Train trainees: workshop to train FSA with a comprehensive agenda to strengthen shark harvest sustainability.
- Replicate the workshop in the main fishing camps.



[Bit.ly/mitiburon](https://bit.ly/mitiburon)



Strengthening the implementation of Appendix II



CITES Scientific Authority
of Mexico

ac-cites@conabio.gob.mx

CONABIO
COMISIÓN NACIONAL PARA EL
CONOCIMIENTO Y USO DE LA BIODIVERSIDAD

