



GREEN  
MUNICIPAL  
FUND

FONDS  
MUNICIPAL  
VERT

# Empowering Municipalities: Funding and Capacity Development for Climate Resilience

Canada-Chile Commission for Environmental Cooperation | 9 October 2025

Katherine Trajan – Project Director, *Adaptation in Action, Green Municipal Fund*

A program of

**FCM**

# Salt Spring Island, British Columbia

On the unceded  
traditional territories of  
the Coast Salish Peoples

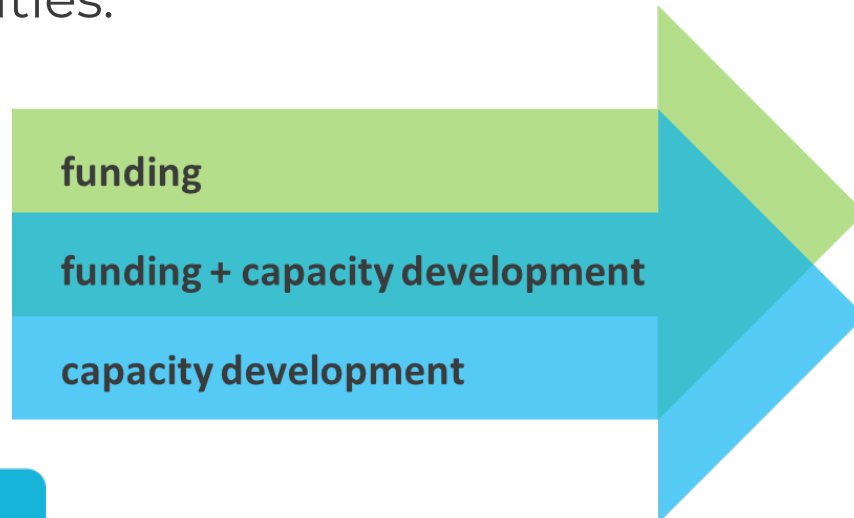
Known for its mild  
climate, but now facing  
hotter, drier summers

**Key climate risks:** heat,  
wildfire, drought, sea-  
level rise



# The Green Municipal Fund (GMF)

- Founded in 2000 by the Federation of Canadian Municipalities through investments from the Government of Canada.
- GMF exists to enhance the quality of life for people in Canada by accelerating a transformation to resilient, net-zero communities.



# Local Leadership for Climate Adaptation

The Local Leadership for Climate Adaptation (LLCA) is a **\$530M** initiative set to fund over **1,400 activities** to equip communities with funding, training and tools to **build long-term climate resilience** by 2032.



**Climate-Ready Plans and Processes:** Climate risk assessments, adaptation planning and integration of resilience into municipal systems.



**Adaptation in Action:** Feasibility studies and projects that reduce climate risks.



**Residential Resilience Financing:** Innovative local financing models that support climate resilience at the community level.



## To date, LLCA has dispersed:

- **\$5.2M** to support 70 communities through Climate-Ready Plans and Processes
- **\$16.1M** for 30 Adaptation in Action implementation projects
- \$1.1M for 17 Adaptation in Action feasibility studies
- **\$13M** to deliver adaptation training to local governments



# Why Local Adaptation Matters



**Local governments are on the front lines of climate change.**

Municipalities provide the services and plan, build, and maintain the infrastructure that people depend on

Adaptation is cost effective - For every dollar invested in climate adaptation measures in Canada, there are long-term savings of \$13 to \$15

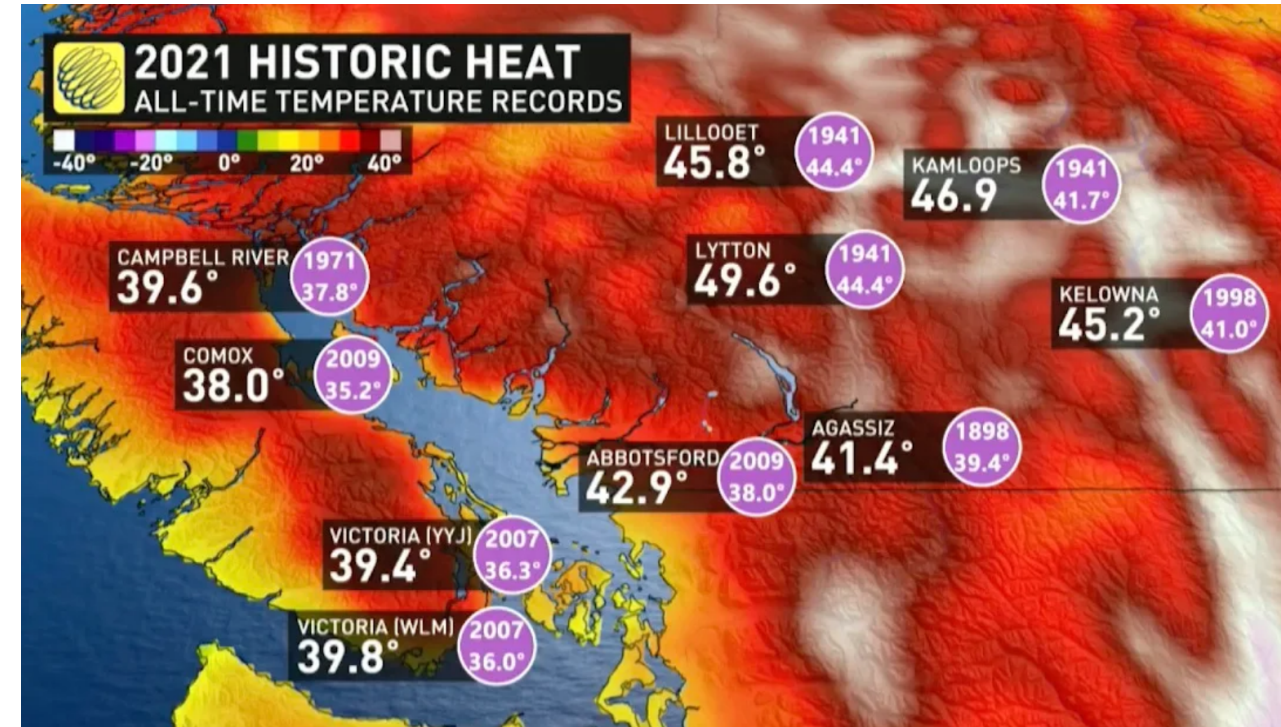
It's about protecting people, places, and prosperity



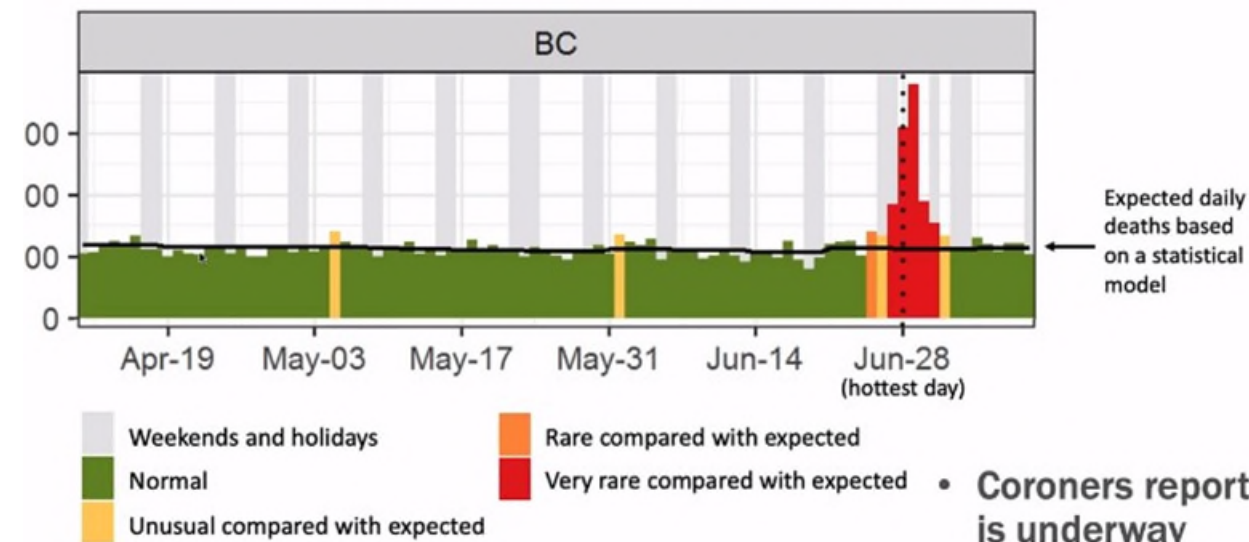
# Why Equity?

The 2021 heat dome resulted in 619 heat-related deaths

- 98% occurred indoors at home
- 91% were on at least one chronic disease registry
- 90% were over 60 years of age
- 56% lived alone
- 33% lived in neighbourhoods that were most socially deprived



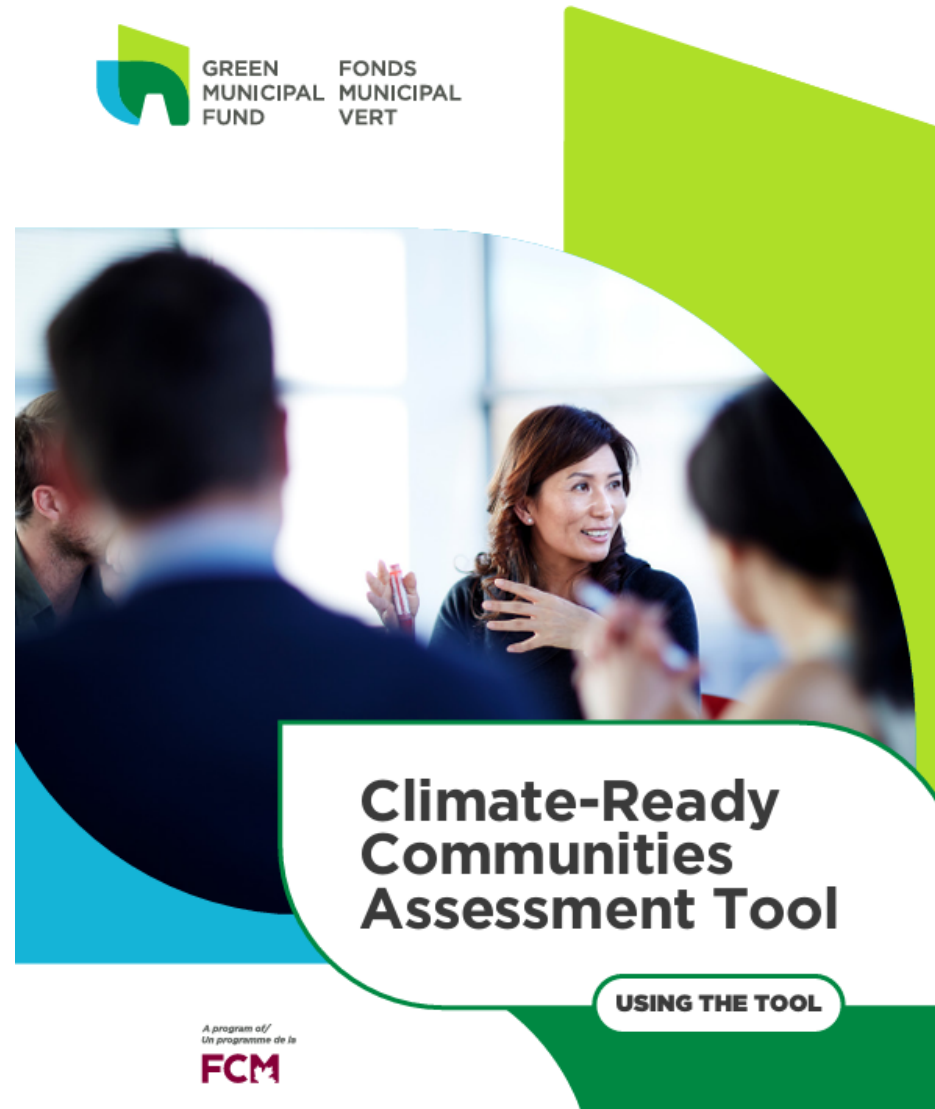
**There were hundreds of deaths during the heat dome across British Columbia**





# Adaptation is a journey, not a destination

- Where to start?
- What's effective?
- How to prioritize?
- Who to include?



# Success Stories

## - Municipal Leadership in Action

### Montreal Capital Budget Allocation

The City of Montreal has committed to dedicating 10% to 15% of its ten-year capital expenditure program to investments related to adaptation to climate change, particularly in natural and hybrid infrastructures, by 2030.





# Jasper: A Story of Preparedness

Wildfires cannot be avoided, but catastrophic results can be.

FireSmart planning saved critical infrastructure during the devastating 2024 wildfire



# Coastal Resilience in Annapolis Royal



Coastal erosion is threatening community infrastructure

Restoring native salt marshes to reduce wave impacts and strengthen ecosystems





# Vancouver's Equity-Centered Climate Risk Assessment



## CENTERING EQUITY

The assessment included extensive engagement with disproportionately impacted communities to better-understand equity within the context of disasters and emergencies.

For each climate-related hazard, a vulnerability analysis was used to identify which communities, ecosystems and infrastructure are at highest risk of negative impacts – this was used to guide development of this strategy and prioritization of actions.





# Building resilient communities for the future

